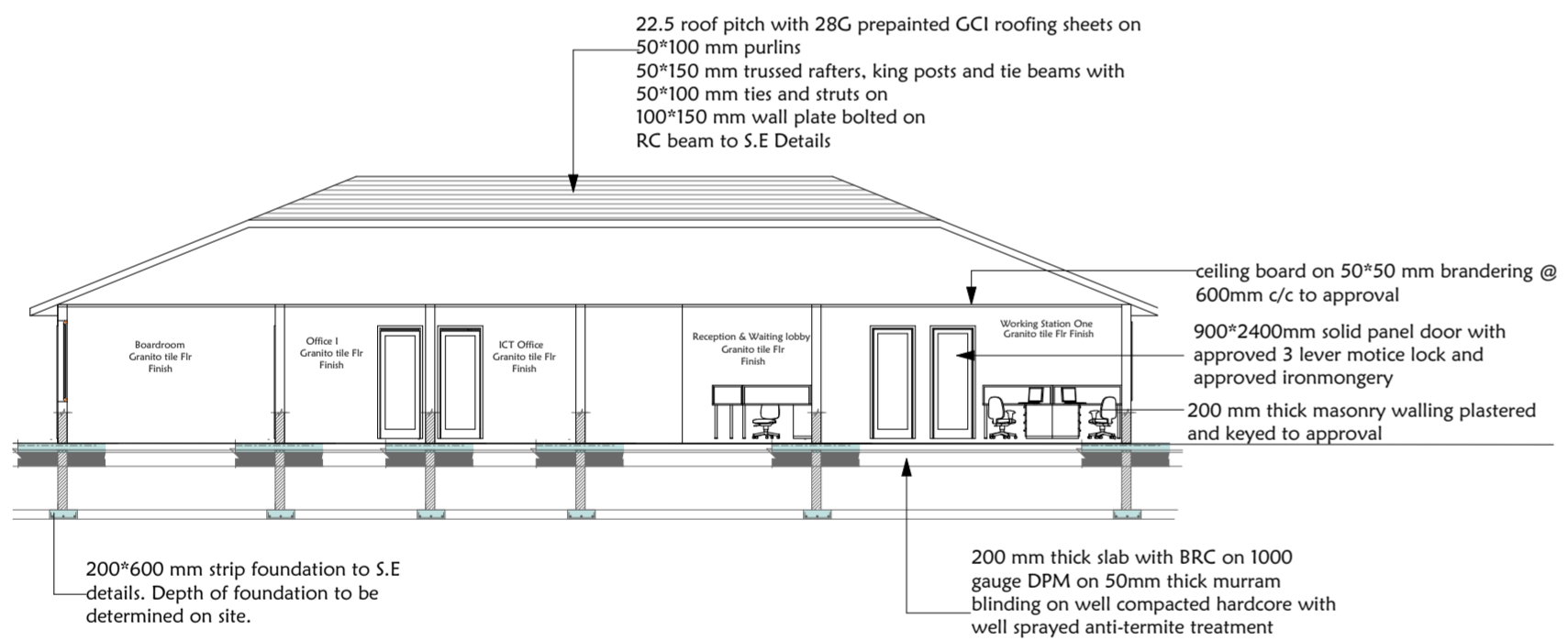


GROUND FLOOR PLAN



Powder coated aluminium sliding windows with ironmongery, 6mm one way glass panel, mosquito sahs, approved lock quality and appropriate installations

200 mm thick masonry walling plastered and keyed to approval

ELEVATION 1

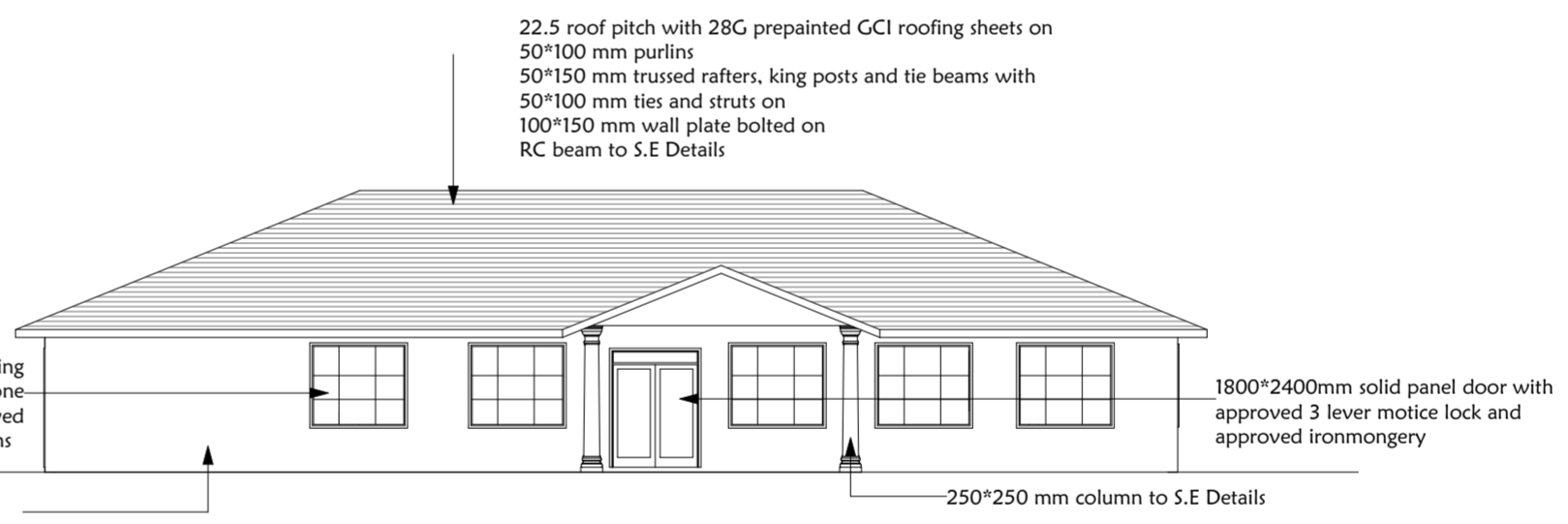
250*250 mm column to S.E Details

Powder coated aluminium sliding windows with ironmongery, 6mm one way glass panel, mosquito sahs, approved lock quality and appropriate installations

ELEVATION 2

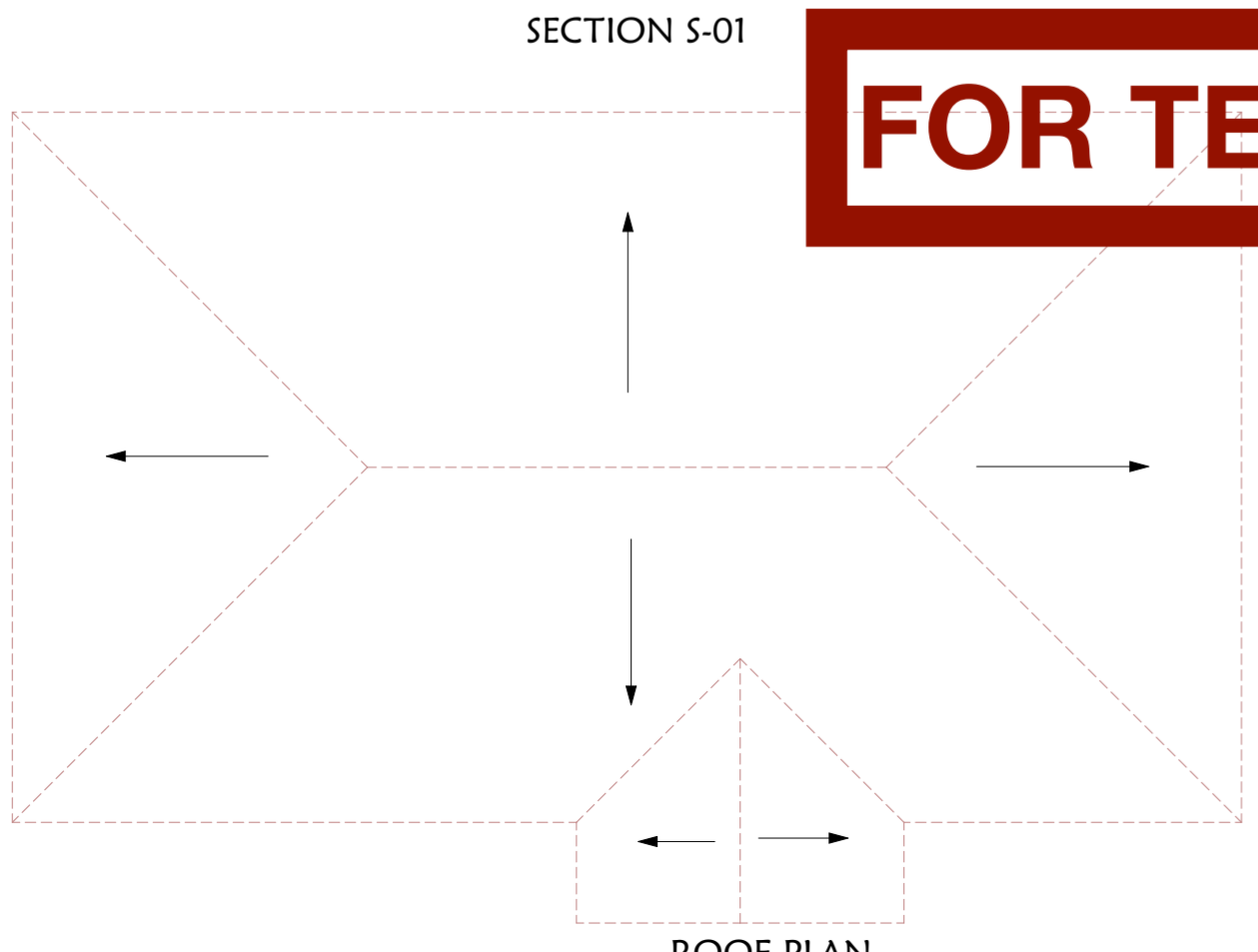
Powder coated aluminium sliding windows with ironmongery, 6mm one way glass panel, mosquito sahs, approved lock quality and appropriate installations

ELEVATION 3



Powder coated aluminium sliding windows with ironmongery, 6mm one way glass panel, mosquito sahs, approved lock quality and appropriate installations

ELEVATION 4



ROOF PLAN

22.5 roof pitch with 28G preprinted GCI roofing sheets on 50*100 mm purlins
50*150 mm trussed rafters, king posts and tie beams with 50*100 mm ties and struts on 100*150 mm wall plate bolted on RC beam to S.E Details

22.5 roof pitch with 28G preprinted GCI roofing sheets on 50*100 mm purlins
50*150 mm trussed rafters, king posts and tie beams with 50*100 mm ties and struts on 100*150 mm wall plate bolted on RC beam to S.E Details

22.5 roof pitch with 28G preprinted GCI roofing sheets on 50*100 mm purlins
50*150 mm trussed rafters, king posts and tie beams with 50*100 mm ties and struts on 100*150 mm wall plate bolted on RC beam to S.E Details

22.5 roof pitch with 28G preprinted GCI roofing sheets on 50*100 mm purlins
50*150 mm trussed rafters, king posts and tie beams with 50*100 mm ties and struts on 100*150 mm wall plate bolted on RC beam to S.E Details

- ### NOTES
- GENERAL**
All dimensions are in mm unless otherwise specified.
Drawings are not to be scaled. Only figured dimensions to be used.
The contractor must check and verify all the dimensions before commencement of work.
Any discrepancies to be clarified with the Project Architect
- CIVIL**
All slab at ground level to be cast over 1000 gauge polythene sheet on 50mm thick murrum blinding on hardcore.
All soil under slab around and under foundation to be treated for termite control.
All soil on cut embankment to be stabilized. The slope not to exceed 45 degree.
Depth of foundation to be determined on site to S.E's approval.
All walls to be reinforced with loop iron at every alternate course.
All adjacent R.C. work and masonry walls to be tied with loop iron at every alternate.
All black cotton soil to be removed from all buildings and paved surfaces
- MECHANICAL**
All plumbing & drainage work to comply with P. H specifications.
All service ducts to be accessible from all floors.
S. V. P denotes soil vent pipes and to be provided at the head of the drainage.
Drains passing beneath buildings and driveways should be encased in 150mm concrete surround.
All underground foul & waste drain pipes shall be of PVC, to comply with BS5255.
The storm water drain pipes to comply with BS. 556.
Minimum slope in drain pipes to be 1%
No Chases for pipes will be allowed in the slabs.
Sleeves will be allowed with written approval from the SE.
No cutting of concrete without express approval from the Architect or SE.
All testing of pipes must be coordinated with electrical conduits and any conflicts must be clarified before work begins.
P. V denotes - permanent vents.
- FLOOR FINISHES**
General Floor Surfaces
40mm Cement sand screed laid on concrete floor bed. 600x600x15mm Grano Tiles on cement screed laid with chess board pattern, flush joints. 300 x 300 x 8 mm Porcelain tiles level joint edge 3mm spacers filled with proprietary grouting with anti-algae and anti-fungal property.
- WALL FINISHES**
Internal Wall surfaces - General
-12mm cement lime plaster for painted surfaces -12mm cement/sand plaster for tiled surfaces
- Washrooms Ceramic Tile color to architects approval. max 2mm space filled with proprietary antialgae and anti-fungal grouting.
External Wall Surfaces
-15mm Cement/sand render on all external walls.
- DECORATIONS**
Internal Wall surfaces
-1no. Priming undercoat to manufacturers specs
-3no. finishing coats - vinyl Silk as manufactured by Duracot Paints or equivalent on clean wall surface free of dust, algae, and undulations.
On raw Metal Works
-1no. priming coat in red oxide anticorrosion paint
-3no. finishing coats in oil paint color to architects approval.
Hardwood Surfaces
-Priming seal on well sanded and smooth surfaces and 2no. coats eggshell finish Polyurethane Varnish
External Walls
-2no. coats Anti-Algae priming coat on exposed wall surfaces as per the manufacturers specifications.
-3no. coats Weather Guard paint as manufactured by Caparol or equivalent quality.
- WINDOWS**
- Powder Coated Aluminium profiled roller sliding windows including glass panel, mosquito sash and ironmongery all to approved specifications.
- 6mm plain sheet glass panels
- lock of approved quality
- Mosquito sash including all accessories for appropriate installations

DO NOT SCALE

LAYOUT APPROVED	DATE	CUSTOMER
DWG APPROVED	DATE	DATE
ARCHITECT		
MINISTRY OF LANDS, HOUSING, PUBLIC WORKS AND URBAN DEVELOPMENT State Department of Public Works		
Arch. L.M. MOCHAMA Ag. Chief Architect For, The Government of Kenya		
PROJECT		
COMPLETION OF PROPOSED STORAGE FACILITIES FOR RURAL ELECTRIFICATION AND RENEWABLE ENERGY CORPORATIO		
CLIENT		
Rural Electrification and Renewable Energy Corporation Kawi House Complex, South C		
DWG TITLE		
Ground Floor Plan, Sections, Elevations, Roof Plan		
APPLICATION UNIT SERIES BLOCK		
SCALE	JOB NO.	
PROJECT ARCHITECT TIMOTHY WATHAKA	CODE	DWG. NO.
CHECKED BY J.K. MUMIRI	A	
CHECKED CHIEF ARCHITECT	B	D
	C	F

© THE GOVERNMENT OF THE REPUBLIC OF KENYA
Date Printed: Thursday, 10 November 2022 13:34